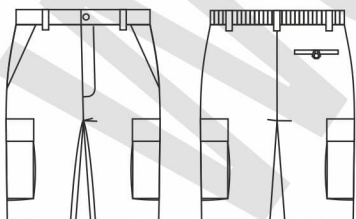




**DESCRIPCIÓN**

Bermuda con cierre de botón y cremallera. Cintura elástica en espalda. Dos bolsillos laterales. Dos bolsillos en perneras de carga con cartera de velcro. Un bolsillo trasero con cierre de presilla y botón.



**PRENDA**

|                |                       |           |
|----------------|-----------------------|-----------|
| MODELO         | B1405                 | <b>CE</b> |
| TIPO DE PRENDA | Bermuda               |           |
| SECTOR         | Basic Industrial      |           |
| CATEGORÍA      | Protección Individual |           |

**FICHA TÉCNICA**

|            |                             |                   |
|------------|-----------------------------|-------------------|
| COSTURAS   | Reforzadas                  |                   |
| ACCESORIOS | Cremallera de nylon         | Botón de plástico |
|            | Cintura elástica en espalda | Velcro            |
| FORRO      | Forro blanco en bolsillos   |                   |
| OTROS      |                             |                   |

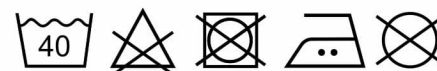
**TALLAS**

38 - 54

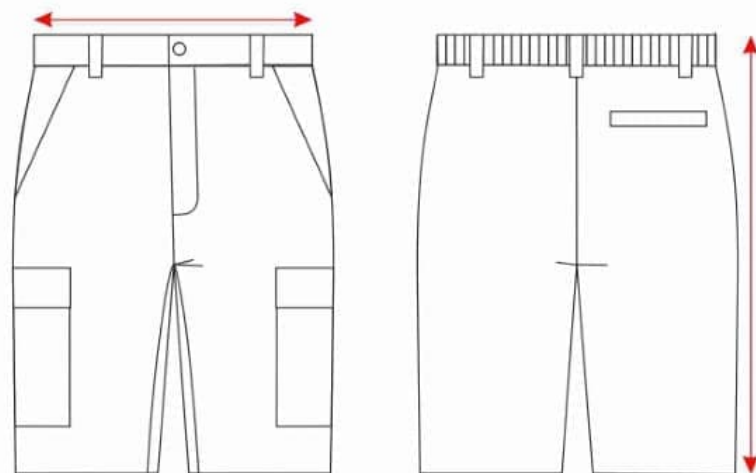
**TEJIDOS**

|                               |                           |
|-------------------------------|---------------------------|
| COLOR                         | Gris, Marino              |
| COMPOSICIÓN TEJIDO PRINCIPAL  | 65% Poliéster 35% Algodón |
| COMPOSICIÓN TEJIDO SECUNDARIO |                           |
| GRAMAJE                       | 200 g.                    |

**CONSERVACIÓN DE LA PRENDA**



# B1405



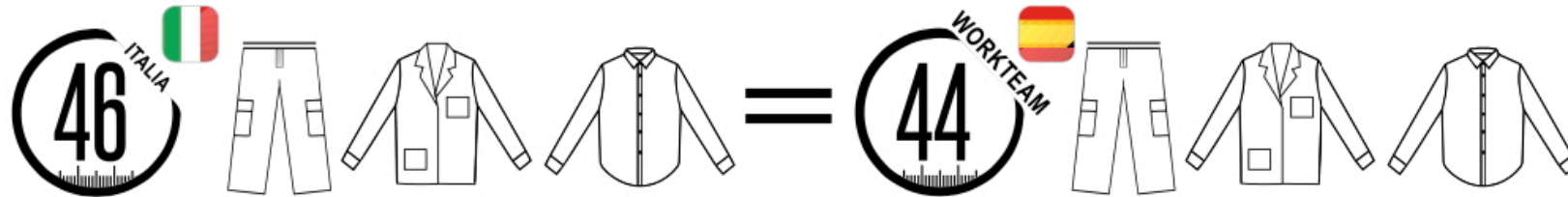
|           | <b>38</b> | <b>40</b> | <b>42</b> | <b>44</b> | <b>46</b> | <b>48</b> | <b>50</b> | <b>52</b> | <b>54</b> |
|-----------|-----------|-----------|-----------|-----------|-----------|-----------|-----------|-----------|-----------|
| ½ CINTURA | 39,5      | 41,5      | 43,5      | 45,5      | 47,5      | 49,5      | 51,5      | 53,5      | 55,5      |
| LARGO     | 56        | 56        | 56,3      | 56,5      | 57        | 57,3      | 57,5      | 57,5      | 57,5      |



\*Medidas en cm

\*Estas medidas son aproximadas

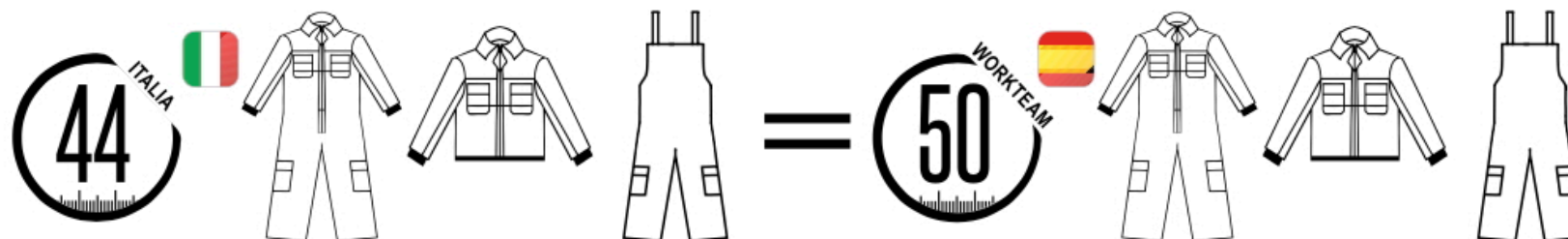
# CONVERSIONE TAGLIE



## PANTALONI • CAMICIE



|                 |   |    |    |    |    |    |    |    |    |
|-----------------|---|----|----|----|----|----|----|----|----|
| TAGLIE ITALIA   |  | 44 | 46 | 48 | 50 | 52 | 54 | 56 | 58 |
| TAGLIE WORKTEAM |  | 42 | 44 | 46 | 48 | 50 | 52 | 54 | 56 |

## TUTE • GIACCHE • PETTORINE



|                 |   |    |    |    |    |    |    |    |    |
|-----------------|---|----|----|----|----|----|----|----|----|
| TAGLIE ITALIA   |  | 44 | 46 | 48 | 50 | 52 | 54 | 56 | 58 |
| TAGLIE WORKTEAM |  | 50 | 52 | 54 | 56 | 58 | 60 | 62 | 64 |